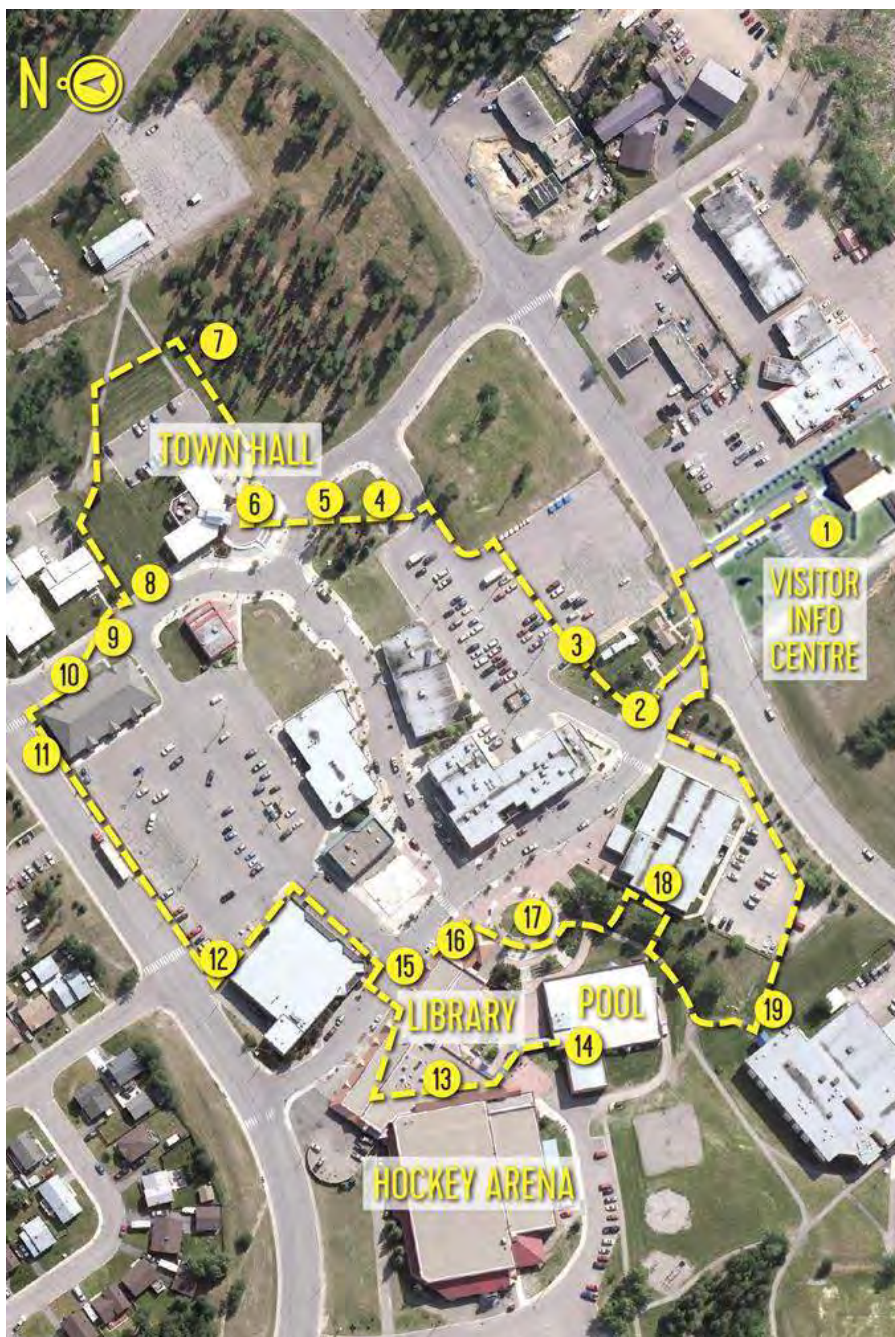


Tumbler Ridge UNESCO Global Geopark



Downtown Walking Tour





Downtown Walking Tour Route

Tumbler Ridge UNESCO Global Geopark Downtown Walking Tour

The Tumbler Ridge Downtown Walking Tour is a 1.5 km walk that takes you through the downtown area, past many displays. These displays showcase the history of Tumbler Ridge, from the first settlers through the coal mining days, the discovery of dinosaur fossils and bones, wind power, and the beautiful scenery and geology that helped the area become the Tumbler Ridge UNESCO Global Geopark.

STOP #1: VISITOR CENTRE

This attractive log building was completed in July 2015. It houses Visitor Information Services, which is managed by the Tumbler Ridge UNESCO Global Geopark (TRUGG), along with office space for TRUGG staff. The building boasts in-floor heating, and large windows that overlook some of the adventure destination visitors might want to see.



Chainsaw Carving beside the Visitor Centre

The District of Tumbler Ridge purchased a unique chainsaw carving of two dinosaurs from the District of Chetwynd, which is prominently displayed in front of the Visitor Centre.

STOP #2: HARTFORD GARDENS

Janet Hartford was a matriarch of the community, and one of Tumbler Ridge's original residents, having moved here in 1982 with her husband George, who served the community as Mayor. She was an enthusiastic volunteer and advocate for the community, and a dedicated school teacher. She was a member of the Regional Hospital Board and the Peace Liard Community Health Services Society. She served on the Tumbler Ridge Library Board, was a leader of the Community Arts Council and received an Arts Council Award. She helped organize the Tumbler Ridge Art Gallery, the TRISPS Craft Fair in November and was the person who originally brought the Ten Thousand Village Craft Sale to town.



Hartford Gardens

She sang in the Community Choir and produced the Millennium Daybook Calendar, but children and adults will remember her best as the driving force in the fundraising team which raised \$40,000 towards the indoor swimming pool. For years, Janet contributed weekly write-ups to the local newspaper. She also conducted 60 weddings in her role as a marriage commissioner.

Janet received the Queen's Golden Jubilee Award Medal in 2000 for volunteer efforts and work in building Canada and Canadian communities. This garden beside the BC Rail Caboose is formally called Hartford Gardens, named after Janet.

Janet moved to Victoria in 2011, and passed away in 2014 at the age of 92.

STOP #3: TUMBLER BRANCH LINE RAILWAY EXHIBIT

The caboose was donated to the town by BC Rail. The informative displays inside, installed in 2011 by Tumbler Ridge Museum Foundation (TRMF), describe the mining history of Tumbler Ridge, specifically with respect to the electric rail line that was installed to transport coal from the mines to the port on Ridley Island near Prince Rupert.



Railway Caboose

On the railing beside the caboose are interpretive signs featuring three sketches created by local artist Joan Zimmer showing the skyline views, and providing information on the trails and mountains in those directions.

On the end of building beside the caboose is a mural painted by Joan Zimmer in 2007. The mural shows a scene from one of the open pit coal mines with a large electric shovel and haul truck, and merges this with ghostly dinosaurs in the mine, and the beautiful scenery that defines Tumbler Ridge, including a waterfall, cliffs, forests, alpine meadows, glaciers and mountains.



Joan Zimmer Mural

STOP #4: MINING SHOVEL BUCKET

This bucket is from a P&H electric shovel, model 2100BL. It was donated by Teck Corporation and installed here by LaPrairie Crane in August 2005 to commemorate the two original coal mines in Tumbler Ridge. The Quintette mine was originally owned by Denison Mines Ltd., and the Bullmoose mine was owned by Teck Resources Ltd. The bucket has a capacity of 15 cubic yards - stand inside and see how big it really is!



Mining Shovel Bucket

STOP #5: PARK

This park across from Town Hall has benches and picnic tables, and is a lovely spot to stop and enjoy a snack or picnic lunch, and take in the view.



Town Hall Park

STOP #6: TOWN HALL

The municipality of Tumbler Ridge was incorporated in April 1981, with construction of the town infrastructure happening over the next two years. This included the Town Hall, which was designed by Downs/Archambault Architects and won an award by the Architectural Institute of British Columbia in 1984. Seen from above, this building is shaped like a dove. Inside you will find council chambers, friendly staff, and a stuffed grizzly bear.



Tumbler Ridge Town Hall

STOP #7: OUTDOOR EXERCISE PARK

This outdoor exercise park was built here to be close to the seniors housing complex. It was installed in 2011, and has rustic benches for resting between sets of exercise.



Outdoor Exercise Park

STOP #8: CENOTAPH AND COMMEMORATION OF FALLEN VETERANS

In 2015 the cenotaph area was greatly enhanced. Benches were added, the stone walkway was laid down, and a sign was installed commemorating fallen World War II soldiers from the Peace Region whose names were given to local mountains and rivers. Tulips, donated by Holland, were planted in a special garden.



Cenotaph and Fallen Veterans Display

STOP #9: ELECTRICAL BOX

Life-like scenes of caves, mountains, waterfalls and dinosaurs were painted on this electrical box in 2009 by Joan Zimmer.



Painted Electrical Box

STOP #10: MURALS BEHIND KC'S DOLLAR STORE

Local artist Rita Henderson painted these murals based on waterfalls in Monkman Provincial Park in 2016. One shows dinosaurs at Kinuseo Falls, and the other depicts bears frolicking in Monkman Creek in front of Monkman Falls.



Kinuseo Falls Mural



Monkman Falls Mural

STOP #11: MINING PHOTOS IN ANGLO AMERICAN OFFICE WINDOWS

Anglo American, who operated the Trend Coal Mine near Tumbler Ridge, had a downtown office in this space. They enhanced the eight windows with photographs from the Trend mine on the slopes of Roman Mountain.



Anglo American Window Photos

STOP #12: INDIGENOUS ART ON SHOP EASY FOODS BUILDING

This indigenous artwork has been on the outside of the grocery store in town since the early years.



Indigenous Art on Shop Easy Building

STOP #13: TRMF DISPLAYS IN COMMUNITY CENTRE

The Tumbler Ridge Museum Foundation has thirty displays in the Community Centre, including the history of the early explorers and pioneers, the first maps of the area, information on archaeology, the creation of Tumbler Ridge, fossil displays and a Sports Hall of Fame.



The Monkman Exhibit in the Tumbler Ridge Community Centre



A Culturally Modified Tree found near Flatbed Creek

STOP #14: MURALS IN THE AQUATIC CENTRE

Tumbler Ridge artist Darcy Jackson, who is also a lifeguard at the pool, painted murals on the walls of the aquatic centre in 2015 and 2017. They include scenes of local waterfalls, lakes and wildlife.



Bergeron Falls Painting



Quality Falls and Kinuseo Falls Painting

STOP #15: PAINTINGS ON COMMUNITY CENTRE WALLS

Joan Zimmer used photographs of local activities and scenery to paint the five mural collages on this wall. They showcase everything from skating, dogsledding, snowmobiling and skiing in winter, to boating, fishing, hunting, rock climbing, finding dinosaur footprints, swimming, running and hiking in our outdoor wilderness.



Community Centre Murals



Community Centre Murals

TOP #16: OUTDOOR GAZEBO

This gazebo was added to the Community Centre building in 2010. It is used for outdoor events such as Canada Day celebrations, musical performances and community parties.



Outdoor Gazebo

STOP #17: ROMAN WALKWAY

The Roman Walkway is a circle of benches in the downtown area from which there is a wonderful view of the mountains to the south. It is a great place for a picnic lunch. This is where the huge community Christmas Tree is decorated and lit up for the holiday season.



Roman Walkway

STOP #18: TEN PHOTOS ON HEALTH CENTRE WINDOWS



Ice Climbing Photo



Hiking Photo

The windows on the east wall of the Health Centre have 10 photographs depicted, each showing an outdoor activity within the Tumbler Ridge UNESCO Global Geopark. These include ice climbing, hiking, running, canoeing, snowshoeing, mountain biking and cross country skiing. Funding for these images was obtained from the Northern Health through the Healthy Communities Committee. There are two benches where you can sit in the shade and admire the photos.

STOP #19: NORTHERN LIGHTS PHOTOS ON NORTHERN LIGHTS COLLEGE



Northern Lights College Photos

The two northern lights images on the Northern Lights College were taken by local photographers. The photo on the right of the Murray River was taken by Anthony Rahardjo, and the left photo was taken by Kevin Sharman just north of Tumbler Ridge.

From here you can complete the walk back to the Visitor Centre parking lot.

© 2018 Wolverine Nordic and Mountain Society

