

Hiking Routes South of the Core Lodge

The headwaters of Babcock Creek, south of the Core Lodge, offer some excellent alpine hiking. These trips are suitable for experienced hikers with good routefinding skills. The alpine ridges are often windy, and fog may roll in unexpectedly. Take a map and compass, and know how to use them.

Directions to the Core Lodge

From Tumbler Ridge, drive south on Highway 52 (the Heritage Highway; the section heading south from town is known locally as the Boundary Road). The paved road passes the turnoff to the Quintette mine and Kinuseo Falls at km 12.7. Keep going straight on the Heritage Highway for 6.8 km to a right turn onto the Core Lodge road. This road is radio controlled - watch for industrial traffic. At 12.5 km, there is a fork. Take the right fork, following the sign saying "all other traffic". The left fork is for mine traffic only. From the Heritage Highway, it is 14 km to the Core Lodge.

The key to access these hikes is the Five Cabin road, which heads south from the Core Lodge and is passable as far as km 8. This unimproved dirt road is suitable for 2 wheel drive vehicles in dry weather, but a 4X4 is needed in wet conditions.

The following routes on the west side of the Five Cabin road access an interconnected alpine ridgeline which has spectacular views in all directions.

Mount Kostuik

Time/Distance: 5-6 hours/8 km return to summit
Elevation Gain: 500 m (1640 ft)
Rating: Challenging

This route ascends old coal exploration trails into the alpine, then climbs the ridge to go to the summit of Mt. Kostuik. To reach the trailhead, drive south from the Core Lodge on the Five Cabin road for 0.6 km and look for a wooden sign for Mt. Kostuik. Park here and head up the dirt track to the west. After 100 metres, turn right, follow this road for 120 metres, then turn left and begin a steady climb. After climbing for 2 km, the trail levels out and enters subalpine meadows. From here, the hiker can scramble up to the ridgetop and head for the summit, which is composed of conglomerate, a rock type with pebbles and cobbles. Excellent views can be had, especially to the south, where peaks of Monkman Park are visible. Anglo American's Trend coal mine is visible to the east. Roman Mountain, the highest summit in the area, displays a syncline or downfold in the strata.

Hidden Valley

Time/Distance: 3-4 hours/6 km return to saddle
Elevation Gain: 300 m (985 ft)
Rating: Challenging

Following a cutline to the west of the Five Cabin Road, this route leads into the subalpine bowl on the west side of Mt. Kostuik. Follow the Five Cabin road south from the Core Lodge for 1.4 km and look for a wooden sign on the right. Follow the path uphill for 200 metres to where it joins the cutline, then follow the cutline into the meadows. It is possible to go to the saddle and climb Mt. Kostuik from the south, or go south from the saddle.

The Terminator

Dist Time/Distance: 3-4 hours/6 km return to summit
Elevation Gain: 450 m (1475 ft)
Rating: Challenging

The pyramid shaped peak visible from the Core Lodge is known as the Terminator. To reach it, drive south on the Five Cabin road for 5.3 km. The route heads up a reclaimed gas well road to the meadows on the north side of the Terminator. From there, it is a steady climb to the top (cover photo). The steep bowl to the south is known as the Super Bowl.

The above routes can be combined into longer hikes, such as a route to the top of Mt. Kostuik, exiting via the Hidden Valley route. For a full day hike, drop a vehicle off at Five Cabin Pass, start hiking on the Mt. Kostuik route, then keep going south along the ridgelines (known as Windy Ridge) to the Terminator, dropping down to your vehicle.

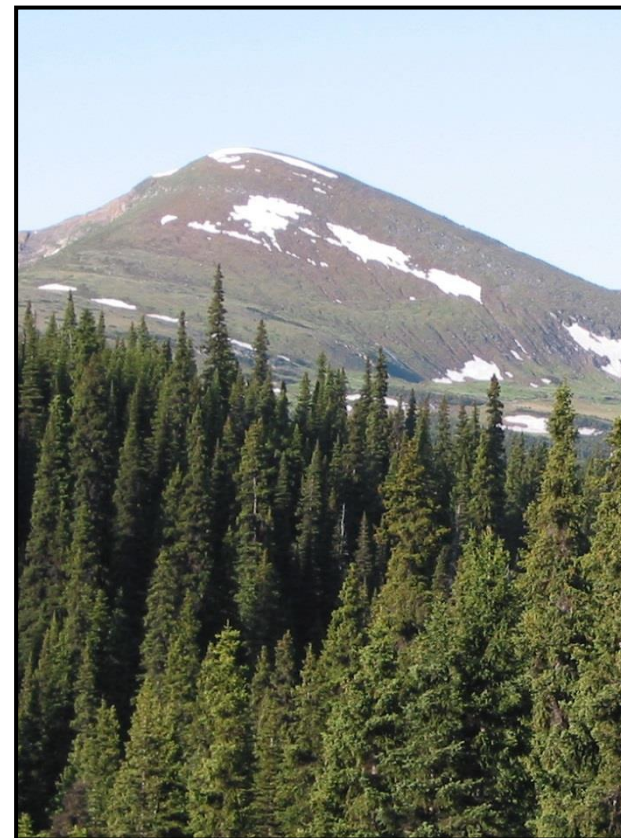
Roman Mountain

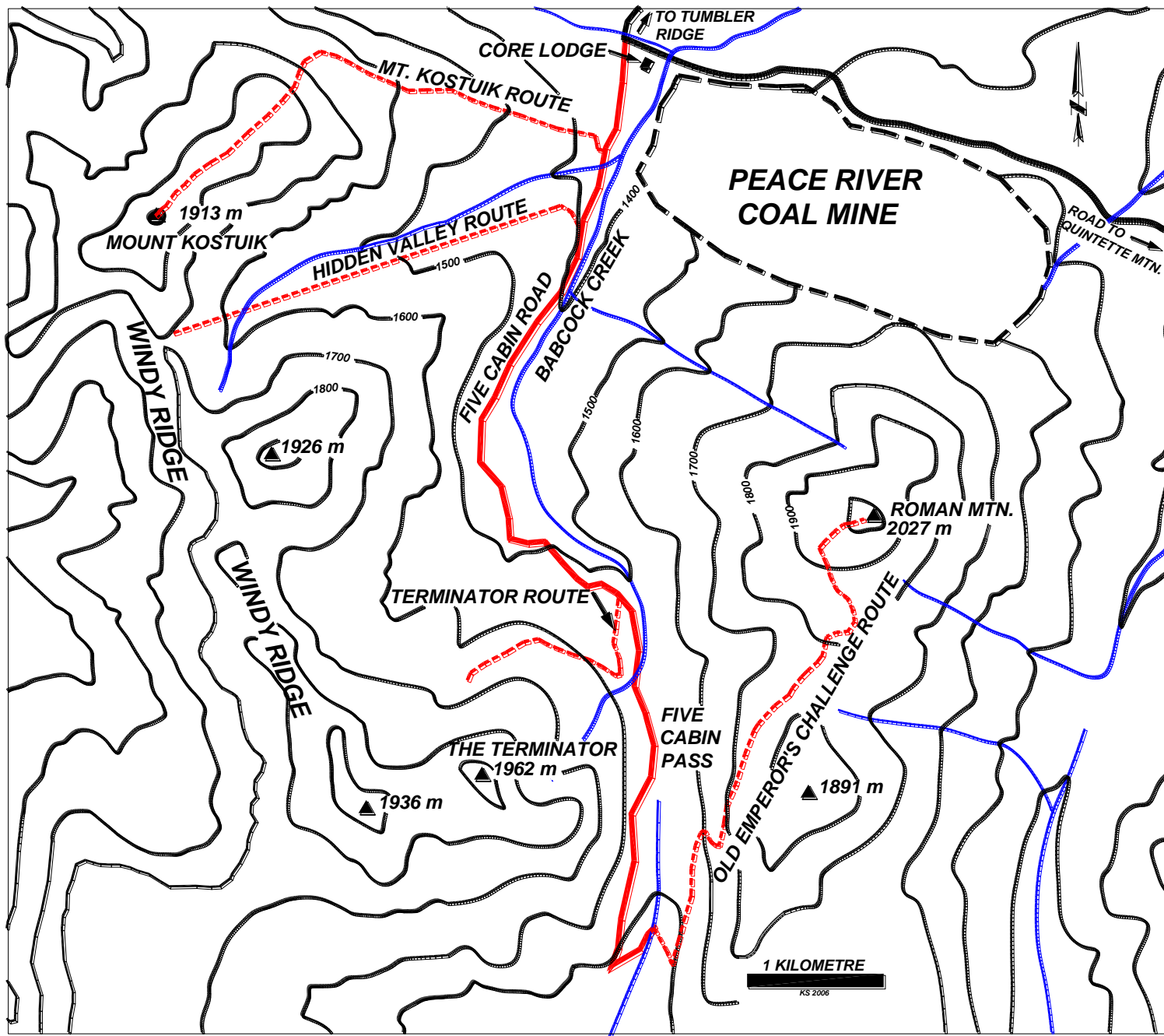
Dist Time/Distance: 5-6 hours/10 km return to summit
Elevation gain: 550 m (1800 ft)
Rating: Challenging

Roman Mountain is the large peak on the east side of the Five Cabin road. Currently the road is passable as far as km 8, where the culverts have been removed at a creek crossing. From here, one can walk up the road to access the alpine areas of Roman Mountain. This is the old route of the Emperors Challenge Mountain Run, a 21 km circuit which starts at the Core Lodge. Extensive alpine areas provide excellent views, and caribou are often seen.

© 2015 Wolverine Nordic and Mountain Society

Hiking Routes South of the Core Lodge





HIKING ROUTES SOUTH OF THE CORE LODGE

- **THESE ROUTES ARE IN BEAR COUNTRY - TRAVEL IN GROUPS AND MAKE NOISE**
- **PLEASE PACK OUT WHAT YOU PACKED IN**

1:50,000 map reference:
93 I/14, 93 I/15

For more information,
contact:

Wolverine Nordic and Mountain Society

Kevin Sharman (250) 242-4860
Charles Helm (250) 242-3984

Photo Gallery website:
www.wnms.ca

Tumbler Ridge Visitor Centre

(250) 242-3123

Tourism website:
www.tumbleridge.ca

© 2015 Wolverine Nordic and Mountain Society

Distributed by the
District of Tumbler Ridge

Photo Credit: Kevin Sharman